



### Aluminum Case Unit:

Linear Bush bearings also comes with light Aluminum case so that assembly can easily finished by bolting. On adjusting the ball circuit orientation of linear bushing against the direction of load longer life can be obtained.

#### Part Number:

**Aluminum Case Unit Asian Standard**

**SC\*\* / SC\*\*L / SC\*\*V / SC\*\*J**

**Aluminum Case Unit Asian Standard  
Open Type**

**SBR\*\*UU / SBR\*\*LUU / TBR\*\*UU / TBR\*\*LUU**

**Aluminum Case Unit European  
Standard**

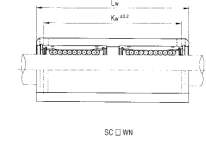
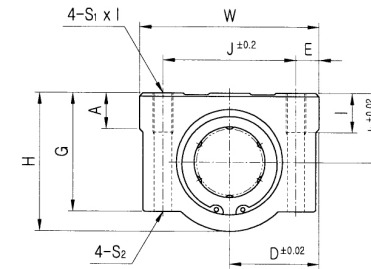
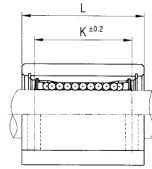
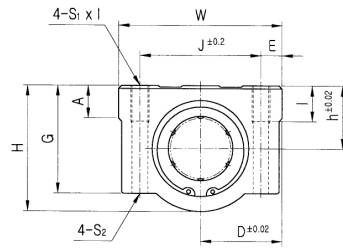
**SCE\*\* / SCE\*\*L / SCE\*\*V**

Prefix and Corresponding Description for Aluminum Case Unit	
Prefix	Description of Prefix
SC	Aluminum Case Unit
SCE	European Standard Aluminum Case Unit
SCJ	Adjustable Type
SBR	Aluminum Case Unit Open Type
TBR	Aluminum Case Unit Flange Open Type
Suffix and Corresponding Description for Aluminum Case Unit	
Suffix	Description of Suffix
Blank	Standard Length
L	Long Length
V	Compact Length
Blank	No Seal
U	One Side Seal
UU	Both Side Seal
Blank	No – Plating Standard
S	Stainless Steel

Aluminum Case Unit  
Asian Standard SC\*\*



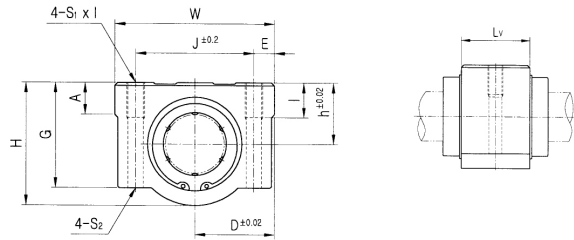
Aluminum Case Unit  
Asian Standard SC\*\*L



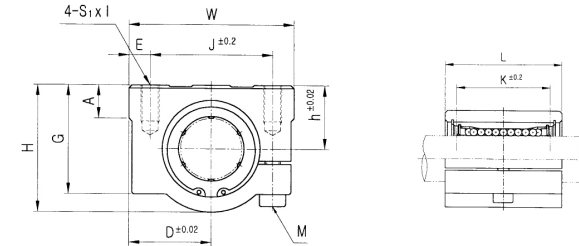
PART NUMBER	L/B	h	D	W	H	G	A	J	E	S <sub>1</sub> ×ℓ	S <sub>2</sub>	K	L	BASIC LOAD RATING (N)		WEIGHT (gf)
														DYNAMIC (C)	STATIC (Co)	
SC8	LM8UU	11	17	34	22	18	6	24	5	M4×8	Φ3.4	18	30	260	400	56
SC10	LM10UU	13	20	40	26	21	8	28	6	M5×10	Φ4.3	21	35	370	540	90
SC12	LM12UU	15	22	44	30	24.5	8	33	5.5	M5×10	Φ4.3	26	39	410	590	112
SC12N	LM12UU	15	21	42	28	24	7.4	30.5	5.5	M5×12	Φ4.3	26	36	410	590	112
SC13	LM13UU	15	22	44	30	24.5	8	33	5.5	M5×10	Φ4.3	26	39	500	770	123
SC16	LM16UU	19	25	50	38.5	32.5	9	36	7	M5×12	Φ4.3	34	44	770	1170	189
SC20	LM20UU	21	27	54	41	35	11	40	7	M6×12	Φ5.2	40	50	860	1370	237
SC25	LM25UU	26	38	76	51.5	41	12	54	11	M8×18	Φ6.8	50	67	980	1560	555
SC30	LM30UU	30	39	78	59.5	49	15	58	10	M8×18	Φ6.8	58	72	1560	2740	685
SC35	LM35UU	34	45	90	68	54	18	70	10	M8×18	Φ6.8	60	80	1660	3130	1100
SC40	LM40UU	40	51	102	78	62	20	80	11	M10×25	Φ8.6	60	90	2150	4010	1600
SC50	LM50UU	52	61	122	102	80	24	100	11	M10×25	Φ8.6	80	110	3820	7930	3350
SC60	LM60UU	58	66	132	114	94	30	108	12	M12×25	Φ10.7	90	122	4820	10200	4270

PART NUMBER	L/B	h	D	W	H	G	A	J	E	S <sub>1</sub> ×ℓ	S <sub>2</sub>	K <sub>w</sub>	L <sub>w</sub>	BASIC LOAD RATING (N)		WEIGHT (gf)
														DYNAMIC (C)	STATIC (Co)	
SC8L	LM8Ux2	11	17	34	22	18	6	24	5	M4×8	Φ3.4	42	58	410	800	94
SC10L	LM10Ux2	13	20	40	26	21	8	28	6	M5×10	Φ4.3	46	68	590	1080	147
SC12L	LM12Ux2	15	22	44	30	24.5	8	33	5.5	M5×10	Φ4.3	64	77	650	1180	220
SC13L	LM13Ux2	15	22	44	30	24.5	8	33	5.5	M5×10	Φ4.3	64	77	800	1540	245
SC16L	LM16Ux2	19	25	50	38.5	32.5	9	36	7	M5×12	Φ4.3	79	89	1230	2340	376
SC20L	LM20Ux2	21	27	54	41	35	11	40	7	M6×12	Φ5.2	90	100	1370	2470	476
SC25L	LM25Ux2	26	38	76	51.5	41	12	54	11	M8×18	Φ6.8	119	136	1560	3120	1115
SC30L	LM30Ux2	30	39	78	59.5	49	15	58	10	M8×18	Φ6.8	132	146	2490	5480	1375
SC35L	LM35Ux2	34	45	90	68	54	18	70	10	M8×18	Φ6.8	140	160	2650	6260	2200
SC40L	LM40Ux2	40	51	102	78	62	20	80	11	M10×25	Φ8.6	150	180	3440	8020	3200
SC50L	LM50Ux2	52	61	122	102	80	24	100	11	M10×25	Φ8.6	200	230	6110	15860	6720
SC60L	LM60Ux2	58	66	132	114	94	30	108	12	M12×25	Φ10.7	182	242	7700	20400	8650

Aluminum Case Unit  
Asian Standard SC\*\*V



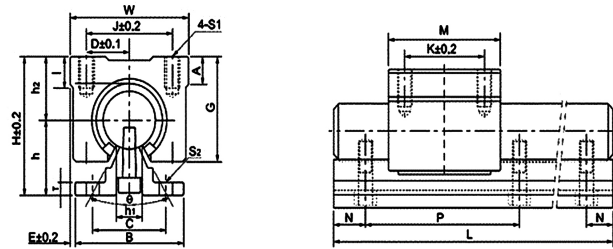
Aluminum Case Unit  
Asian Standard SC\*\*J



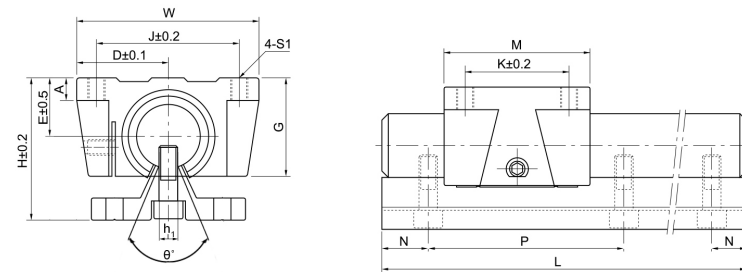
PART NUMBER	L/B	h	D	W	H	G	A	J	E	S <sub>1</sub> ×ℓ	S <sub>2</sub>	L <sub>v</sub>	BASIC LOAD RATING (N)		WEIGHT (gf)
													DYNAMIC (C)	STATIC (Co)	
SC8V	LM8UU	11	17	34	22	18	6	24	5	M4×8	Φ3.4	15.4	260	400	36
SC10V	LM10UU	13	20	40	26	21	8	28	6	M5×10	Φ4.3	19.5	370	540	63
SC12V	LM12UU	15	22	44	30	24.5	8	33	5.5	M5×10	Φ4.3	20.5	410	590	74
SC12VN	LM12UU	15	21	42	28	24	7.4	30.5	5.5	M5×12	Φ4.3	20.5	410	590	74
SC13V	LM13UU	15	22	44	30	24.5	8	33	5.5	M5×10	Φ4.3	20.5	500	770	85
SC16V	LM16UU	19	25	50	38.5	32.5	9	36	7	M5×12	Φ4.3	23.5	770	1170	132
SC20V	LM20UU	21	27	54	41	35	11	40	7	M6×12	Φ5.2	27.4	860	1370	170
SC25V	LM25UU	26	38	76	51.5	41	12	54	11	M8×18	Φ6.8	37.4	980	1560	405
SC30V	LM30UU	30	39	78	59.5	49	15	58	10	M8×18	Φ6.8	40.9	1560	2740	495
SC35V	LM35UU	34	45	90	68	54	18	70	10	M8×18	Φ6.8	45.4	1660	3130	790
SC40V	LM40UU	40	51	102	78	62	20	80	11	M10×25	Φ8.6	56.4	2150	4010	1220
SC50V	LM50UU	52	61	122	102	80	24	100	11	M10×25	Φ8.6	68.9	3820	7930	2300

PART NUMBER	L/B	h	D	W	H	G	A	J	E	S <sub>1</sub> ×ℓ	K	L	M	BASIC LOAD RATING (N)		OUTER DIAMETER	WEIGHT (gf)
														DYNAMIC (C)	STATIC (Co)		
SCJ10UU	LM10UUAJ	13	20	40	26	21	8	28	6	M5×12	21	35	M4	370	540	Φ10	90
SCJ12UU	LM12UUAJ	15	21	42	28	24	7.4	30.5	5.75	M5×12	26	36	M4	410	590	Φ12	112
SCJ13UU	LM13UUAJ	15	22	44	30	24.5	8	33	5.5	M5×12	26	39	M4	500	770	Φ13	123
SCJ16UU	LM16UUAJ	19	25	50	38.5	32.5	9	36	7	M5×12	34	44	M4	770	1170	Φ16	189
SCJ20UU	LM20UUAJ	21	27	54	41	35	11	40	7	M6×12	40	50	M5	860	1370	Φ20	237
SCJ25UU	LM25UUAJ	26	38	76	51.5	41	12	54	11	M8×18	50	67	M6	980	1560	Φ25	555
SCJ30UU	LM30UUAJ	30	39	78	59.5	49	15	58	10	M8×18	58	72	M6	1560	2740	Φ30	685
SCJ35UU	LM35UUAJ	34	45	90	68	54	18	70	10	M8×18	60	80	M6	1660	3130	Φ35	1100
SCJ40UU	LM40UUAJ	40	51	102	78	62	20	80	11	M10×25	60	90	M8	2150	4010	Φ40	1600
SCJ50UU	LM50UUAJ	52	61	122	102	80	24	100	11	M10×25	80	110	M8	3820	7930	Φ50	3350

Aluminum Case Unit  
Asian Standard Open Type SBR\*\*UU, SBR\*\*LUU



Aluminum Case Unit  
Asian Standard Open Type TBR\*\*UU, TBR\*\*LUU



PART NUMBER	L/B	D	H	W	G	θ	A	M	S <sub>1</sub> ×ℓ	h <sub>1</sub>	E	J	K	BASIC LOAD RATING (N)		WEIGHT (gf)
														DYNAMIC (C)	STATIC (Co)	
SBR10UU	LM10UUOP	18	-	36	24	80°	7	32	M5×10	6	15	25	20	372	549	65
SBR12UU	LM12UUOP	20.5	40	41	28	80°	9	39	M5×10	7.5	17.5	28	26	420	800	100
SBR13UU	LM13UUOP	20	-	40	27.6	80°	8	39	M5×10	8.5	17	28	28	520	910	100
SBR16UU	LM16UUOP	22.5	45	45	33	80°	9	45	M5×12	11	20	32	30	770	1170	150
SBR20UU	LM20UUOP	24	50	48	39	60°	11	50	M6×12	11	23	35	35	860	1370	200
SBR25UU	LM25UUOP	30	60	60	47	50°	14	65	M6×12	12	27	40	40	980	1560	450
SBR30UU	LM30UUOP	35	70	70	56	50°	15	70	M8×18	15	33	50	50	1560	2740	630
SBR35UU	LM35UUOP	40	80	80	63	50°	18	80	M8×18	17	37	55	55	1660	3130	920
SBR40UU	LM40UUOP	45	90	90	72	50°	20	90	M10×20	20	42	65	65	2150	4010	1330
SBR50UU	LM50UUOP	60	115	120	91	50°	25	110	M10×20	25	53	94	80	3820	7930	3000

PART NUMBER	L/B	D	H	W	G	θ	A	M	S <sub>1</sub> ×ℓ	h <sub>1</sub>	E	J	K	BASIC LOAD RATING (N)		WEIGHT (Kg)
														DYNAMIC (C)	STATIC (Co)	
SBR12LUU	LM12LUUOPx2	20	40	41	27	80°	9	78	M5×10	7.5	17.5	28	50	1200	2000	0.2
SBR16LUU	LM16LUUOPx2	22.5	45	45	33	80°	9	85	M5×12	10	20	32	60	1548	2360	0.3
SBR20LUU	LM20LUUOPx2	24	50	48	39	60°	11	96	M6×12	10	23	35	70	1764	2740	0.4
SBR25LUU	LM25LUUOPx2	30	60	60	47	50°	14	130	M6×12	11.5	27	40	100	1960	3140	0.9
SBR30LUU	LM30LUUOPx2	35	70	70	56	50°	15	140	M8×18	14	33	50	110	3140	5480	1.26
SBR40LUU	LM40LUUOPx2	45	90	90	72	50°	20	175	M10×20	19	42	65	140	4320	8040	2.66
SBR50LUU	LM50LUUOPx2	60	115	120	92	50°	20	215	M10×20	23	53	94	160	7640	15880	6

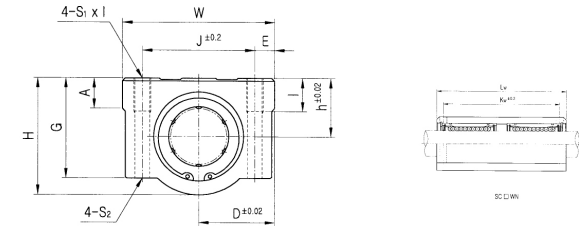
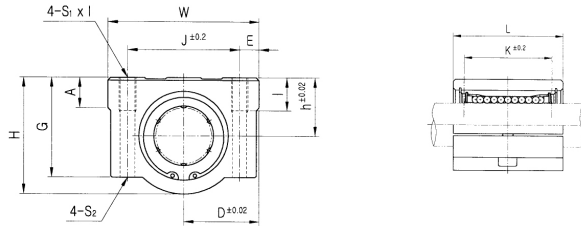
PART NUMBER	L/B	D	H	W	G	θ	A	M	S <sub>1</sub>	h <sub>1</sub>	E	J	K	BASIC LOAD RATING (N)		WEIGHT (gf)
														DYNAMIC (C)	STATIC (Co)	
TBR16UU	LM16UUOP	31	40	62	26	80°	8	42	M5	11	18	50	30	392	490	0.18
TBR20UU	LM20UUOP	34	50	68	31	60°	10	51	M6	11	21	54	37	784	1176	0.3
TBR25UU	LM25UUOP	41	60	82	41	50°	12	65	M8	12	28	65	50	1568	2352	0.6
TBR30UU	LM30UUOP	45.5	70	91	48	50°	12	75	M8	15	34	75	60	1764	2940	0.9

PART NUMBER	L/B	D	H	W	G	θ	A	M	S <sub>1</sub>	h <sub>1</sub>	E	J	K	BASIC LOAD RATING (N)		WEIGHT (gf)
														DYNAMIC (C)	STATIC (Co)	
TBR16LUU	LM16LUUOPx2	31	40	62	26	80°	8	85	M5	11	18	50	60	780	980	0.36
TBR20LUU	LM20LUUOPx2	34	50	68	31	60°	10	96	M6	11	21	54	70	1568	2352	0.6
TBR25LUU	LM25LUUOPx2	41	60	82	41	50°	12	130	M8	12	28	65	100	3136	4704	1.2
TBR30LUU	LM30LUUOPx2	45.5	70	91	48	50°	12	140	M8	15	34	75	110	3528	5880	1.8

Aluminum Case Unit  
European Standard SCE\*\*

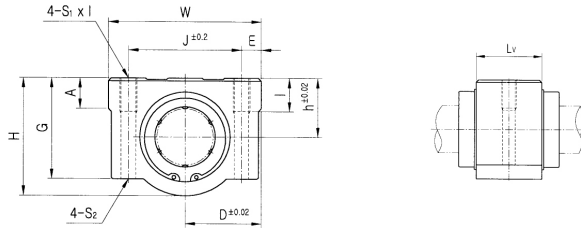


Aluminum Case Unit  
European Standard SCE\*\*L



PART NUMBER	L/B	L	h	D	W	H	G	A	J	E	S <sub>1</sub> ×ℓ	S <sub>2</sub>	K	BASIC LOAD RATING (N)		WEIGHT (gf)
														DYNAMIC (C)	STATIC (Co)	
SCE8	LME8UU	30	11	17	34	22	18	6	24	5	M4×8	Φ3.4	18	260	400	60
SCE12	LME12UU	39	15	22	44	30	24.5	8	33	5.5	M5×10	Φ4.3	26	410	590	118
SCE16	LME16UU	44	19	25	50	38.5	32.5	9	36	7	M5×12	Φ4.3	34	770	1170	180
SCE20	LME20UU	53	21	27	54	41	35	11	40	7	M6×12	Φ5.2	40	860	1370	245
SCE25	LME25UU	67	26	38	76	51.5	41	12	54	11	M8×18	Φ6.8	50	980	1560	550
SCE30	LME30UU	76	30	39	78	59.5	49	15	58	10	M8×18	Φ6.8	58	1560	2740	760
SCE40	LME40UU	90	40	51	102	78	62	20	80	11	M10×25	Φ8.6	60	2150	4010	1700
SCE50	LME50UU	110	52	61	122	102	80	24	100	11	M10×25	Φ8.6	80	3820	7930	2950

PART NUMBER	L/B	h	D	W	H	G	A	J	E	S <sub>1</sub> ×ℓ	S <sub>2</sub>	K <sub>w</sub>	L <sub>w</sub>	BASIC LOAD RATING (N)		WEIGHT (gf)
														DYNAMIC (C)	STATIC (Co)	
SCE8L	LME8U×2	11	17	34	22	18	6	24	5	M4×8	Φ3.4	42	58	410	800	98
SCE12L	LME12U×2	15	22	44	30	24.5	8	33	5.5	M5×10	Φ4.3	64	77	650	1180	232
SCE16L	LME16U×2	19	25	50	38.5	32.5	9	36	7	M5×12	Φ4.3	79	89	1230	2340	360
SCE20L	LME20U×2	21	27	54	41	35	11	40	7	M6×12	Φ5.2	90	106	1370	2740	490
SCE25L	LME25U×2	26	38	76	51.5	41	12	54	11	M8×18	Φ6.8	119	136	1560	3120	1100
SCE30L	LME30U×2	30	39	78	59.5	49	15	58	10	M8×18	Φ6.8	132	154	2490	5480	1525
SCE40L	LME40U×2	40	51	102	78	62	20	80	11	M10×25	Φ8.6	150	180	3440	8020	3400
SCE50L	LME50U×2	52	61	122	102	80	24	100	11	M10×25	Φ8.6	200	230	6110	15860	5920



PART NUMBER	L/B	h	D	W	H	G	A	J	E	S <sub>1</sub> x l	S <sub>2</sub>	L <sub>r</sub>	BASIC LOAD RATING (N)		WEIGHT (gf)
													DYNAMIC (C)	STATIC (C <sub>0</sub> )	
SCE8V	LME8UU	11	17	34	22	18	6	24	5	M4x8	Φ3.4	14.4	260	400	40
SCE12V	LME12UU	15	22	44	30	24.5	8	33	5.5	M5x10	Φ4.3	20.3	410	590	82
SCE16V	LME16UU	19	25	50	38.5	32.5	9	36	7	M5x12	Φ4.3	22.3	770	1170	122
SCE20V	LME20UU	21	27	54	41	35	11	40	7	M6x12	Φ5.2	28.3	860	1370	176
SCE25V	LME25UU	26	38	76	51.5	41	12	54	11	M8x18	Φ6.8	40.4	980	1560	400
SCE30V	LME30UU	30	39	78	59.5	49	15	58	10	M8x18	Φ6.8	48.4	1560	2740	570
SCE40V	LME40UU	40	51	102	78	62	20	80	11	M10x25	Φ8.6	56.4	2150	4010	1320
SCE50V	LME50UU	52	61	122	102	80	24	100	11	M10x25	Φ8.6	72.3	3820	7930	1900