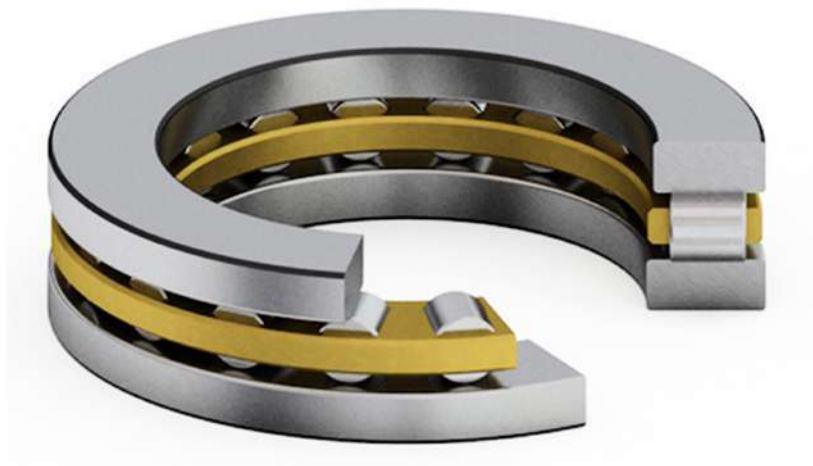


Thrust Cylindrical Roller Bearings:

Thrust Cylindrical Roller Bearings consist of an inner and outer ring, a cylindrical roller cage. They can sustain only axial loads in one direction, but they are suitable for heavy loads and have high axial rigidity.

The cages are machined brass and retaining polyamide cage.



Suffix and Corresponding Description For Thrust Cylindrical Roller Bearings	
Suffix	Description of Suffix
TV	Polyamide Resin Cage
M	Brass Cage
AA	Aluminum Alloy Cage



Boundary Dimensions									Basic Load Rating		Limiting Speed		
(mm)									(KN)		(rpm)		
d	D	d _i	D _i	T	D _{c1}	D _c	D _w	B	r _s (min)	C _r	C _{or}	Grease	Oil
10	24	24	10	9	10	24	3.5	2.75	0.3	10.80	21.50	3400	13000
12	26	26	12	9	12	26	3.5	2.75	0.3	11.50	23.90	3000	12000
15	28	28	16	9	15	28	3.5	2.75	0.3	12.20	26.80	2800	11000
17	30	30	18	9	17	30	3.5	2.75	0.3	12.70	29.00	2500	10000
20	35	35	21	10	20	35	4.5	2.75	0.3	20.20	46.50	2100	8500
25	42	42	26	11	25	42	5	3	0.6	27.30	68.00	1800	7000
30	47	47	32	11	30	47	5	3	0.6	27.80	72.50	1500	6000
30	52	52	32	16	30	52	7.5	4.25	0.6	53.00	129.00	1500	6000
30	60	60	32	18	30	60	5.5	6.25	1	54.00	166.00	1300	5000
35	52	52	37	12	35	52	5	3.5	0.6	31.00	87.00	1400	5500
35	62	62	37	18	35	62	7.5	5.25	1	54.50	139.00	1200	4900
35	68	68	37	20	35	68	6	7	1	66.50	214.00	1200	4600
40	60	60	42	13	40	60	6	3.5	0.6	43.00	121.00	1200	4800
40	68	68	42	19	40	68	9	5	1	74.50	190.00	1100	4400
40	78	78	42	22	40	78	7	7.5	1	85.00	277.00	1000	4000
40	90	90	42	23	40	90	6.5	8.25	1.1	111.00	435.00	900	3600
45	65	65	47	14	45	65	6	4	0.6	45.50	135.00	1100	4400
45	73	73	47	20	45	73	9	5.5	1	82.00	222.00	1000	4100
45	85	85	47	24	45	85	7.5	8.25	1	102.00	345.00	900	3600
45	100	100	47	25	45	100	7	9	1.1	128.00	510.00	800	3200
50	70	70	52	14	50	70	6	4	0.6	48.50	150.00	1000	4000
50	78	78	52	22	50	78	9	6.5	1	85.00	238.00	950	3800
50	95	95	52	27	50	95	8	9.5	1.1	125.00	445.00	800	3200
50	110	110	52	27	50	110	8	9.5	1.5	168.00	680.00	730	2900
55	78	78	57	16	55	78	6	5	0.6	62.50	215.00	900	3600
55	90	90	57	25	55	90	11	7	1	121.00	340.00	830	3300
55	105	105	57	30	55	105	9	10.5	1.1	158.00	570.00	730	2900
55	120	120	57	29	55	120	8	10.5	1.5	186.00	800.00	650	2600
60	85	85	62	17	60	85	7.5	4.75	1	69.00	215.00	830	3300
60	95	95	62	26	60	95	11	7.5	1	126.00	365.00	780	3100

Bearing Designation				Abutment and Fillet Dimensions			Mass Approx		
Bearing	Thrust Cylindrical Roller and Cage Assembly	Inner Ring	Outer Ring	(mm)			(kg)		
				d _s	D _b	r _{as}	811	K811	WS
				(min)	(max)	(max)	812	K812	
893	K893	874	K874	GS					
81100	K81100	WS81100	GS81100	21	14	0.3	0.0195	0.0035	0.008
81101	K81101	WS81101	GS81101	23	16	0.3	0.022	0.004	0.009
81102	K81102	WS81102	GS81102	25	18	0.3	0.026	0.006	0.010
81103	K81103	WS81103	GS81103	27	20	0.3	0.030	0.008	0.011
81104	K81104	WS81104	GS81104	32	23	0.3	0.040	0.012	0.014
81105	K81105	WS81105	GS81105	39	28	0.6	0.060	0.018	0.021
81106	K81106	WS81106	GS81106	44	33	0.6	0.070	0.020	0.025
81206	K81206	WS81206	GS81206	48	33	0.6	0.140	0.050	0.045
89306	K89306	WS89306	GS89306	56	34	1	0.250	0.046	0.100
81107	K81107	WS81107	GS81107	49	38	0.6	0.090	0.024	0.033
81207	K81207	WS81207	GS81207	56	41	1	0.235	0.065	0.085
89307	K89307	WS89307	GS89307	64	40	1	0.360	0.064	0.150
81108	K81108	WS81108	GS81108	56	44	0.6	0.135	0.035	0.044
81208	K81208	WS81208	GS81208	63	44	1	0.265	0.085	0.090
89308	K89308	WS89308	GS89308	74	46	1	0.520	0.100	0.210
87408	K87408	WS87408	GS87408	88	45	1.1	0.78	0.12	0.33
81109	K81109	WS81109	GS81109	61	49	0.6	0.150	0.040	0.055
81209	K81209	WS81209	GS81209	68	49	1	0.310	0.100	0.105
89309	K89309	WS89309	GS89309	81	51	1	0.670	0.140	0.270
87409	K87409	WS87409	GS87409	97	52	1.1	1.05	0.17	0.44
81110	K81110	WS81110	GS81110	66	54	0.6	0.165	0.045	0.060
81210	K81210	WS81210	GS81210	73	54	1	0.385	0.105	0.140
89310	K89310	WS89310	GS89310	90	58	1	0.940	0.180	0.380
87410	K87410	WS87410	GS87410	107	55	1.5	1.38	0.26	0.56
81111	K81111	WS81111	GS81111	75	58	0.6	0.250	0.060	0.095
81211	K81211	WS81211	GS81211	83	61	1	0.610	0.190	0.210
89311	K89311	WS89311	GS89311	100	64	1	1.270	0.240	0.520
87411	K87411	WS87411	GS87411	117	65	1.5	1.77	0.3	0.74
81112	K81112	WS81112	GS81112	80	65	1	0.285	0.083	0.101
81212	K81212	WS81212	GS81212	88	66	1	0.660	0.200	0.230



Boundary Dimensions										Basic Load Rating		Limiting Speed	
(mm)										(KN)		(rpm)	
d	D	d _i	D _i	T	D _{c1}	D _c	D _w	B	r _s	C _r	C _{or}	Grease	Oil
									(min)				
60	110	110	62	30	60	110	9	10.5	1.1	162.00	600.00	680	2700
60	130	130	62	32	60	130	9	11.5	1.5	223.00	950.00	630	2500
65	90	90	67	18	65	90	7.5	5.25	1	73.00	236.00	780	3100
65	100	100	67	27	65	100	11	8	1	130.00	385.00	730	2900
65	115	115	67	30	65	115	9	10.5	1.1	167.00	635.00	650	2600
65	140	140	68	34	65	140	10	12	2	258.00	1090.00	580	2300
70	95	95	72	18	70	95	7.5	5.25	1	76.50	257.00	730	2900
70	105	105	72	27	70	105	11	8	1	134.00	410.00	680	2700
70	125	125	72	34	70	125	10	12	1.1	205.00	790.00	600	2400
70	150	150	73	36	70	150	11	12.5	2	315.00	1330.00	550	2200
75	100	100	77	19	75	100	7.5	5.75	1	78.00	268.00	680	2700
75	110	110	77	27	75	110	11	8	1	138.00	435.00	650	2600
75	135	135	77	36	75	135	11	12.5	1.5	239.00	920.00	550	2200
75	160	160	78	38	75	160	12	13	2	370.00	1600.00	500	2000
80	105	105	82	19	80	105	7.5	5.75	1	79.50	279.00	650	2600
80	115	115	82	28	80	115	11	8.5	1	143.00	460.00	630	2500
80	140	140	82	36	80	140	11	12.5	1.5	246.00	970.00	530	2100
80	170	170	83	41	80	170	12	14.5	2.1	390.00	1740.00	480	1900
85	110	110	87	19	85	110	7.5	5.75	1	83.00	300.00	630	2500
85	125	125	88	31	85	125	12	9.5	1	169.00	550.00	580	2300
85	150	150	88	39	85	150	12	13.5	1.5	281.00	1100.00	500	2000
85	180	180	88	42	85	180	13	14.5	2.1	430.00	1890.00	450	1800
90	120	120	92	22	90	120	9	6.5	1	112.00	395.00	580	2300
90	135	135	93	35	90	135	14	10.5	1.1	213.00	680.00	530	2100
90	155	155	93	39	90	155	12	13.5	1.5	289.00	1160.00	480	1900
90	190	190	93	45	90	190	13	16	2.1	450.00	2060.00	430	1700
100	135	135	102	25	100	135	11	7	1	158.00	555.00	500	2000
100	150	150	103	38	100	150	15	11.5	1.1	243.00	795.00	480	1900
100	170	170	103	42	100	170	13	14.5	1.5	335.00	1370.00	430	1700
110	145	145	112	25	110	145	11	7	1	165.00	605.00	480	1900

Bearing Designation				Abutment and Fillet Dimensions			Mass Approx		
Bearing	Thrust Cylindrical Roller and Cage Assembly	Inner Ring	Outer Ring	(mm)			(kg)		
				d _s	D _b	r _{as}	811	K811	WS
				(min)	(max)	(max)	812	K812	
		893	K893	GS					
		874	K874						
89312	K89312	WS89312	GS89312	105	69	1	1.350	0.250	0.550
87412	K87412	WS87412	GS87412	127	69	1.5	2.27	0.38	0.94
81113	K81113	WS81113	GS81113	85	70	1	0.340	0.090	0.125
81213	K81213	WS81213	GS81213	93	71	1	0.775	0.215	0.280
89313	K89313	WS89313	GS89313	110	74	1	1.430	0.260	0.580
87413	K87413	WS87413	GS87413	137	73	2	2.75	0.47	1.14
81114	K81114	WS81114	GS81114	90	74	1	0.365	0.097	0.135
81214	K81214	WS81214	GS81214	98	76	1	0.815	0.225	0.295
89314	K89314	WS89314	GS89314	120	80	1	1.930	0.340	0.800
87414	K87414	WS87414	GS87414	146	76	2	3.37	0.65	1.36
81115	K81115	WS81115	GS81115	95	80	1	0.425	0.115	0.155
81215	K81215	WS81215	GS81215	103	81	1	0.860	0.240	0.310
89315	K89315	WS89315	GS89315	129	85	1.5	2.410	0.470	0.970
87415	K87415	WS87415	GS87415	156	80	2	4.02	0.8	1.61
81116	K81116	WS81116	GS81116	100	85	1	0.445	0.119	0.165
81216	K81216	WS81216	GS81216	106	86	1	0.950	0.250	0.350
89316	K89316	WS89316	GS89316	134	90	1.5	2.530	0.490	1.020
87416	K87416	WS87416	GS87416	166	90	2.1	5.32	0.88	2.02
81117	K81117	WS81117	GS81117	105	89	1	0.475	0.125	0.175
81217	K81217	WS81217	GS81217	116	92	1	1.280	0.300	0.490
89317	K89317	WS89317	GS89317	144	96	1.5	3.140	0.590	1.280
87417	K87417	WS87417	GS87417	175	93	2.1	5.53	1.03	2.25
81118	K81118	WS81118	GS81118	114	95	1	0.670	0.170	0.250
81218	K81218	WS81218	GS81218	126	97	1	1.820	0.540	0.640
89318	K89318	WS89318	GS89318	149	101	1.5	3.280	0.620	1.330
87418	K87418	WS87418	GS87418	184	103	2.1	6.65	1.13	2.76
81120	K81120	WS81120	GS81120	128	106	1	1.000	0.300	0.350
81220	K81220	WS81220	GS81220	139	109	1	2.240	0.620	0.810
89320	K89320	WS89320	GS89320	163	110	1.5	4.190	0.810	1.690
81122	K81122	WS81122	GS81122	138	116	1	1.100	0.325	0.385



Boundary Dimensions										Basic Load Rating		Limiting Speed		Bearing Designation				Abutment and Fillet Dimensions			Mass Approx		
(mm)										(KN)		(rpm)		Bearing	Thrust Cylindrical Roller and Cage Assembly	Inner Ring	Outer Ring	(mm)			(kg)		
d	D	d _i	D _i	T	D _{c1}	D _c	D _w	B	r _s	C _r	C _{or}	Grease	Oil					d _s	D _b	r _{as}	811	K811	WS
									(min)														
110	160	160	113	38	110	160	15	11.5	1.1	258.00	885.00	450	1800	81222	K81222	WS81222	GS81222	149	119	1	2.450	0.685	0.880
110	190	190	113	48	110	190	15	16.5	2	430.00	1770.00	400	1600	89322	K89322	WS89322	GS89322	183	122	2	6.030	1.150	2.440
120	155	155	122	25	120	155	11	7	1	172.00	655.00	450	1800	81124	K81124	WS81124	GS81124	148	126	1	1.170	0.340	0.415
120	170	170	123	39	120	170	15	12	1.1	264.00	930.00	430	1700	81224	K81224	WS81224	GS81224	159	129	1	2.690	0.730	0.980
130	170	170	132	30	130	170	12	9	1	197.00	755.00	400	1600	81126	K81126	WS81126	GS81126	162	137	1	1.740	0.415	0.663
130	190	187	133	45	130	190	19	13	1.5	360.00	1210.00	380	1500	81226	K81226	WS81226	GS81226	178	140	1.5	4.200	1.140	1.530
140	180	178	142	31	140	180	12	9.5	1	206.00	815.00	380	1500	81128	K81128	WS81128	GS81128	172	147	1	1.950	0.450	0.750
140	200	197	143	46	140	200	19	13.5	1.5	370.00	1280.00	350	1400	81228	K81228	WS81228	GS81228	188	150	1.5	4.570	1.200	1.690
150	190	188	152	31	150	190	12	9.5	1	214.00	870.00	350	1400	81130	K81130	WS81130	GS81130	182	157	1	2.070	0.470	0.800
160	200	198	162	31	160	200	12	9.5	1	221.00	930.00	330	1300	81132	K81132	WS81132	GS81132	192	167	1	2.190	0.500	0.840